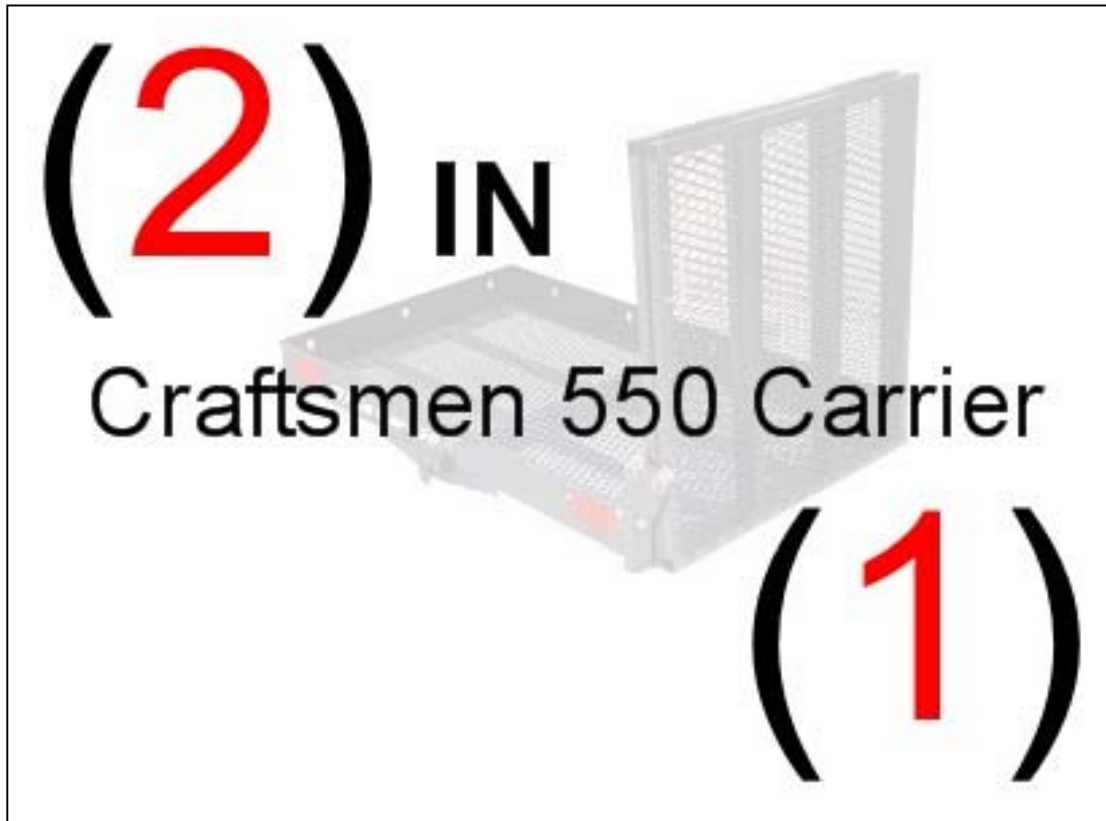


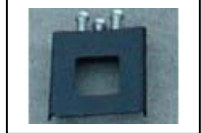
The Craftsmen (2) In (1) 500 Scooter/Wheelchair Carrier



Installation Manual

PARTS LIST

PART #: A101 BLACK SQUARE RECIEVER BRACKET, W/ 3 x 7/16" BOLTS ON BOTTOM SIDE.



PART #: A102 5/8" BOLT (LONG) W/ MATCHING WASHER AND NUT. (2)



PART #: A103 5/16" BOLT (LONG) W/ MATCHING WASHER AND NUT



PART #: A104 7/16" BOLT (LONG) W/ MATCHING WASHER AND NUT (2)



PART #: A105 7/16" BOLT (SHORT) W/ MATCHING WASHER AND NUT (2)



PART #: A106 3/8" BOLTS (SHORT) – QUANTITY: 4



PART #: A107 9/16" BOLT (SHORT) W/ MATCHING NUT (



PART #: A108 1/4" BOLT (SHORT) W/ FLAT HEAD AND MATCHING NUT – QUANTITY: 2



PART #: A109 7/16 SHORT JAM NUT WITH BOLT



PART #: A1010 CLASS 2 HITCH STINGER W/ BUILT IN TILT HINGE



PART #: A1011 CARRIER DRAW BAR W/ GEAR AND PLUNGER



PART #: A1012 BLACK CARRIER W/ ATTACHED RAMP



PART #: A1013 SQUARE BRASS FLANGE FOR PLUNGER



PART #: A1014 BLACK, ROUND PLASTIC KNOB FOR END OF PLUNGER



PART #: A1015 BLACK ARM RAMP BRACKET FOR INTERLOCKING PULL PINS



PART #: A1016 LARGE SILVER SPRING PULL PIN – QUANTITY: 2



PART #: A1017 SMALL SILVER SPRING PULL PIN



PART #: A1018 CLASS 3 HITCH ADAPTER





STEP 1: PLACING BRASS FLANGE ON THE PLUNGER/SPRING.

A:) FIRST PUSH DOWN SPRING ON PLUNGER AND REMOVE THE NUT.

B:) PLACE SQUARE BRASS FLANGE ON END OF PLUNGER.

C:) SCREW NUT BACK ONTO THREADED END OF PLUNGER, (ABOUT AN INCH FROM END OF THREADED SECTION)



STEP 2:

NEXT SCREW OTHER END OF GEAR AND PLUNGER INTO OPEN END OF CARRIER DRAW BAR. THERE WILL BE A

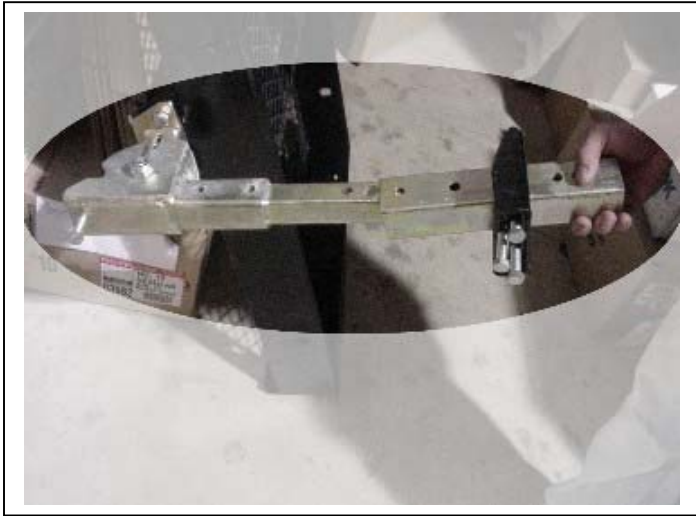


STEP 3:

SLIDE DRAW BAR INTO THE TILT HINGE SECTION OF THE CLASS 2 HITCH STINGER

MAKE SURE THE 2 METAL ARMS STICKING OUT OF SIDES OF STINGER FIT IN GROVES OF TILT HINGE.

LINE UP HOLES AND SLIDE THE 5/8" BOLT (LONG) THROUGH AND FASTEN WITH WASHER AND NUT.



STEP 4:

FOR CLASS 3 HITCH APPLICATIONS, SLIDE CLASS 2 HITCH STINGER THROUGH THE MIDDLE OF THE CLASS 3 ADAPTER.



STEP 5:

ALINE THE HOLES, STARTING FROM THE RIGHT SIDE, USE BOTH 7/16" BOLTS AND SLIDE THEM THROUGH THE TWO HOLES CLOSEST TO TILT HINGE SECTION OF CLASS 2 STINGER. SECURE THEM FROM THE OTHER END W/ MATCHING WASHERS AND NUTS.



STEP 6:

SLIDE THE BLACK SQUARE RECIEVER BRACKET ONTO THE CLASS 3 ADAPTER WITH THE 3 SMALL BOLTS POINTING DOWN.



STEP 7:

SLIDE SPRIG SIDE OF THE PLUNGER THROUGH THE BOTTOM OF THE CARRIER SO THE THREADED END STICKS OUT FROM OPPOSITE END OF CARRIER.

(NOTE: BE SURE YOU HAVE COMPLETED STEP #1 PRIOR TO STEP #3 AS PART #: **A1013** SQUARE BRASS FLANGE MUST BE INSTALLED TO THE PLUNGER PRIOR TO THIS STEP)



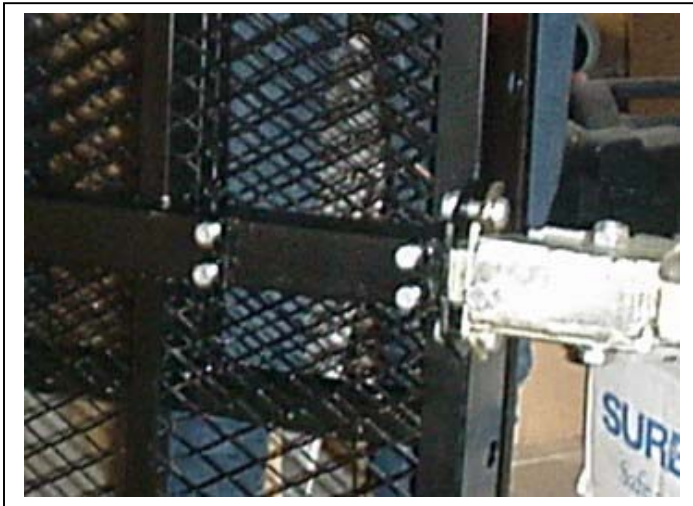
STEP 8:

SCREW BLACK, PLASTIC KNOB ON THE END OF PLUNGER THAT HAS THE SPRING WHERE IT STICKS OUT FROM CARRIER.



STEP 9:

USE THE PAIR OF 7/16" BOLTS PART #: A104 7/16" BOLT (LONG) AND WASHERS TO SECURE THE DRAW BAR TO THE SIDE OF THE CARRIER



STEP 10:

USE THE (4) 3/8" SHORT BOLTS TO SECURE THE DRAW BAR FROM BOTTOM OF THE CARRIER.



STEP 11:

FASTEN THE BLACK ARM RAMP BRACKET TO THE OUTER RIGHT EDGE OF CARRIER WITH THE PAIR OF 1/4" BOLTS (SHORT), WITH THE FLAT HEADS ON THE INNER PART OF THE CARRIER AND SECURE MATCHING NUTS.



STEP 12: REMOVE NUTS FROM THE END OF BOTH LARGE SILVER SPRING PULL PINS.

SCREW THE THREADED ENDS OF PULL PINS INTO THE TOP HALF OF THE BLACK ARM RAMP BRACKET.

SCREW THE NUTS INTO THE ENDS OF THE PULL PINS

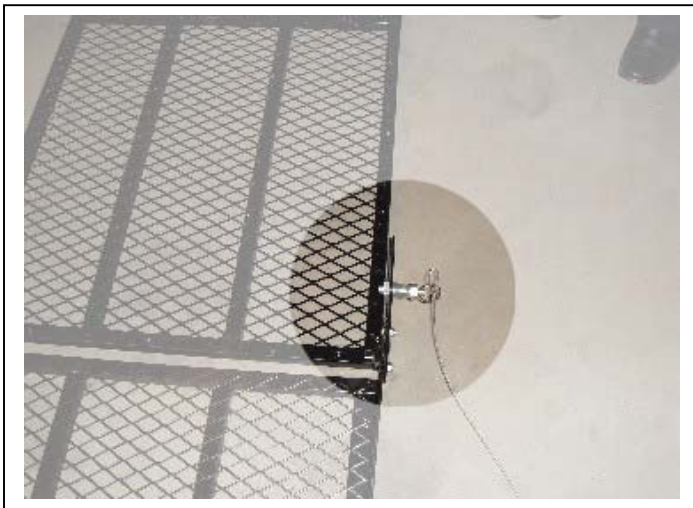
NOTE: MAKE SURE THEY ARE NOT THREADED TOO FAR IN SO THE RAMP ON CARRIER CAN PASS BY BOTH THE SPRING PULL PINS AS THEY ARE PULLED OUT!!



STEP 13:

1. REMOVE THE NUT FROM END OF THE SMALL SPRING PULL PIN
2. SCREW THE SPRING PULL PIN INTO CARRIER JUST TO THE RIGHT OF THE BLACK, ROUND RUBBER STOPPER
3. SCREW THE NUT INTO THE END OF THE PULL PIN

NOTE: MAKE SURE IT IS NOT THREADED TOO FAR IN SO THE RAMP CAN LAY FLAT ON THE CARRIER AND CAN PASS BY THE SPRING PULL PIN WHEN PULLED OUT!!



STEP 14:

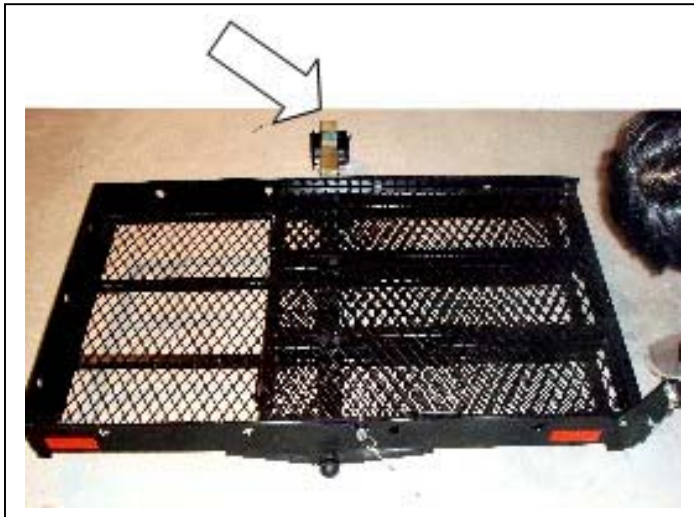
1. TAKE THE OTHER END OF SILVER CABLE AND ATTACH IT TO THE RING ON THE END OF THE LARGE SILVER PULL PIN CLOSEST TO THE LEFT.

NOTE: THIS WILL ALLOW THE USER TO PULL ON THE CABLE TO RELEASE THE PULL PINS TO OPERATE THE FOLDING RAMP AND SCURE IT TO THE CARRIER WHEN FOLDING THE CARRIER UP AGAINST THE BACK OF THE VEHICAL LIKE A TAIL GATE.



STEP 15:

1. TO ATTACH CARRIER TO VEHICAL, SLIDE STINGER INTO THE HITCH OF THE VEHICAL.
2. ALINE THE HOLE IN THE VEHICAL HITCH WITH THE MATCHING HOLE IN THE STINGER
SLIDE THE COROSpondING BOLT THROUGH THE HITCH AND SECURE FROM OTHER END WITH THE WASHER AND NUT



STEP 16:

SLIDE THE BLACK SQUARE RECIEVER BRACKET UNTILL IT IS TOUCHING THE RECIEVER ON THE VEHICAL AND SECURE IT BY THIGHTENING THE THREE BOLTS ON THE BOTTOM SIDE



STEP 17:

1. WITH THE CARRIER INSTALLED, USE THE 7/16" BOLT (SHORT) AND SCREW IT INTO THE UNDER SIDE OF THE TILT HINGE SECTION OF THE STINGER AND SECURE W/ BOLT.

NOTE: THIS IS A JAM BOLT AND NUT THE IS MENT TO KEEP THE CARRIER LEVEL. DO NOT SCREW IN TO FAR OR THE CARRIER WILL NOT BE ABLE TO PERFORM Its FOLD UP FUNCTION.

NOTE:

FOR CLASS 2 AND 3 APPLICATIONS, THERE WILL BE SOME HARDWARE AND OR PARTS THAT WILL NOT BE USED.

THE CLASS 2 APPTICATIONS WILL NOT USE THE CLASS 3 ADAPTER, BLACK SQUARE RECIEVER BRACKET, OR 5/8" BOLT (LONG) W/ MATCHING WASHER AND NUT.

THE CLASS 3 APPTICATIONS WILL NOT USE THE 5/16" BOLT (LONG) W/ MATCHING WASHER AND NUT.