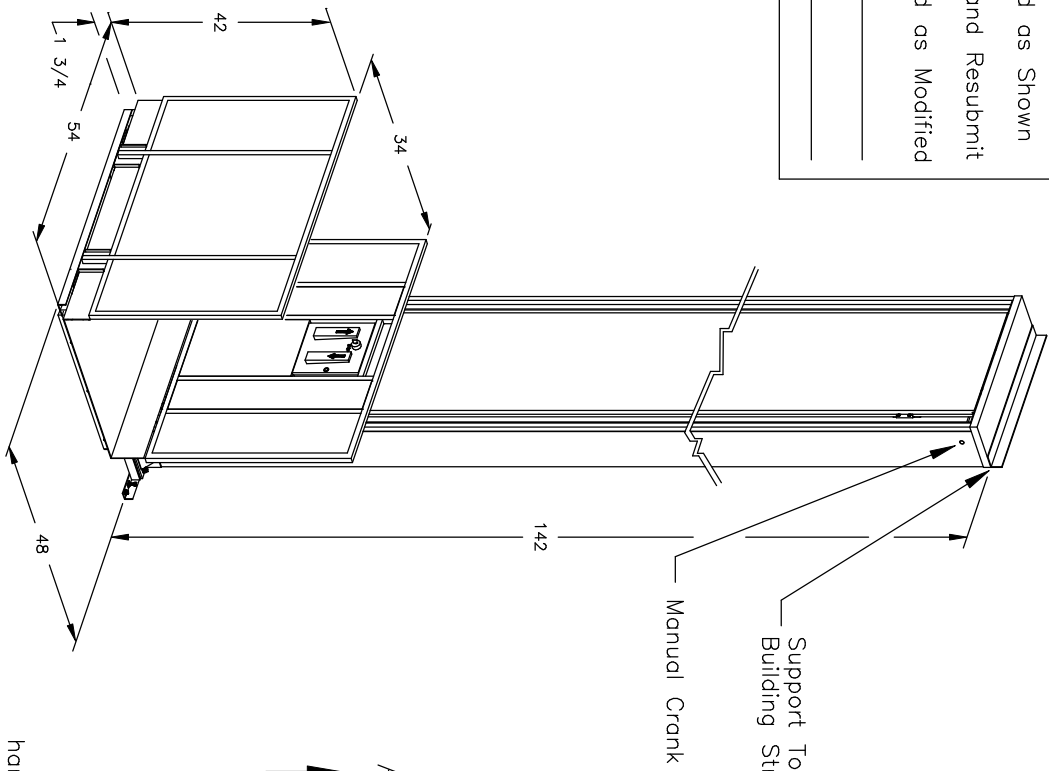
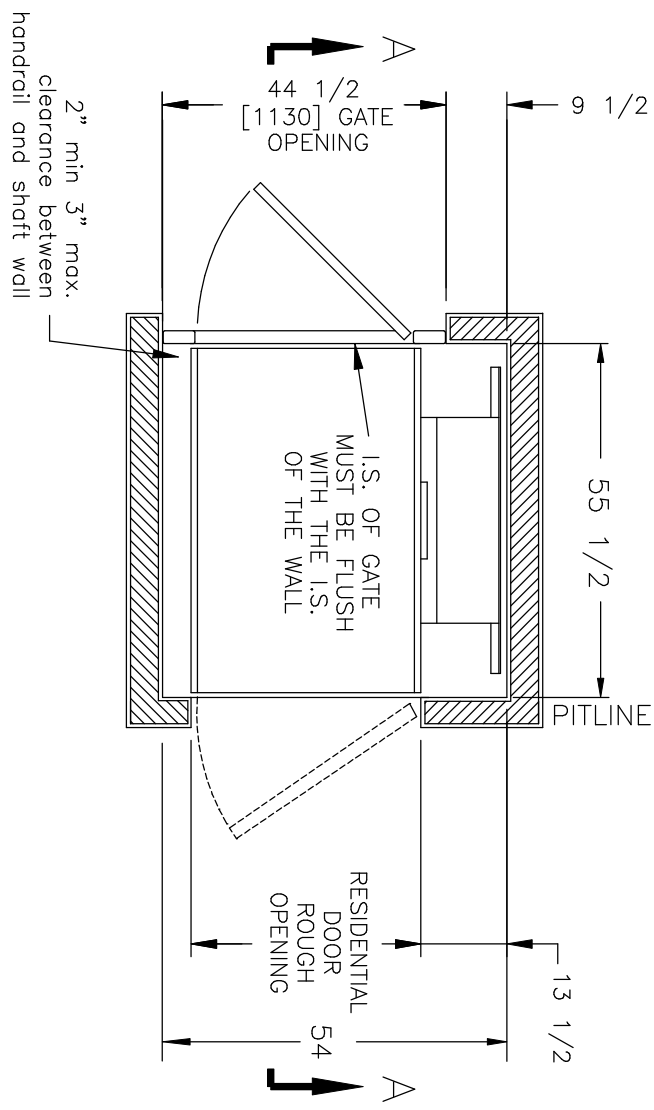


Accepted as Shown
 Revise and Resubmit
 Accepted as Modified
 Date: _____
 Per: _____



- SPECIFICATIONS:**
- 40" x 54" LIFT PLATFORM
 - 54" x 54" FOOTPRINT
 - 142" TOWER HEIGHT
 - 0" - 120" LIFT RANGE
 - MAXIMUM LOAD 550 lbs.
 - 8 FEET/MINUTE LIFT SPEED
 - SCREW NUT WORM GEAR DRIVE
 - MOTOR: 1/2 H.P. 110V A.C.
 - POWER SUPPLY: 110V/1PH/60HZ C/W 15A FUSED DISCON.
 - NON-LOAD BEARING BACKUP SAFETY NUT ON LIFT SHAFT
 - SAFETY HANDRAIL ON CARRIAGE
 - ZERO-LOAD START IN BOTTOM POSITION
 - SOLID PLATFORM



TRUS-T-LIFT DIMENSIONS

TOTAL TRAVEL	120	INCHES	No. OF LANDINGS	2
LOCATION	ENCLOSED RESIDENTIAL TRUS<T>LIFT SAMPLE DRAWING RESIDENTIAL LIFT			

ARCHITECT	
GENERAL CONTRACTOR	

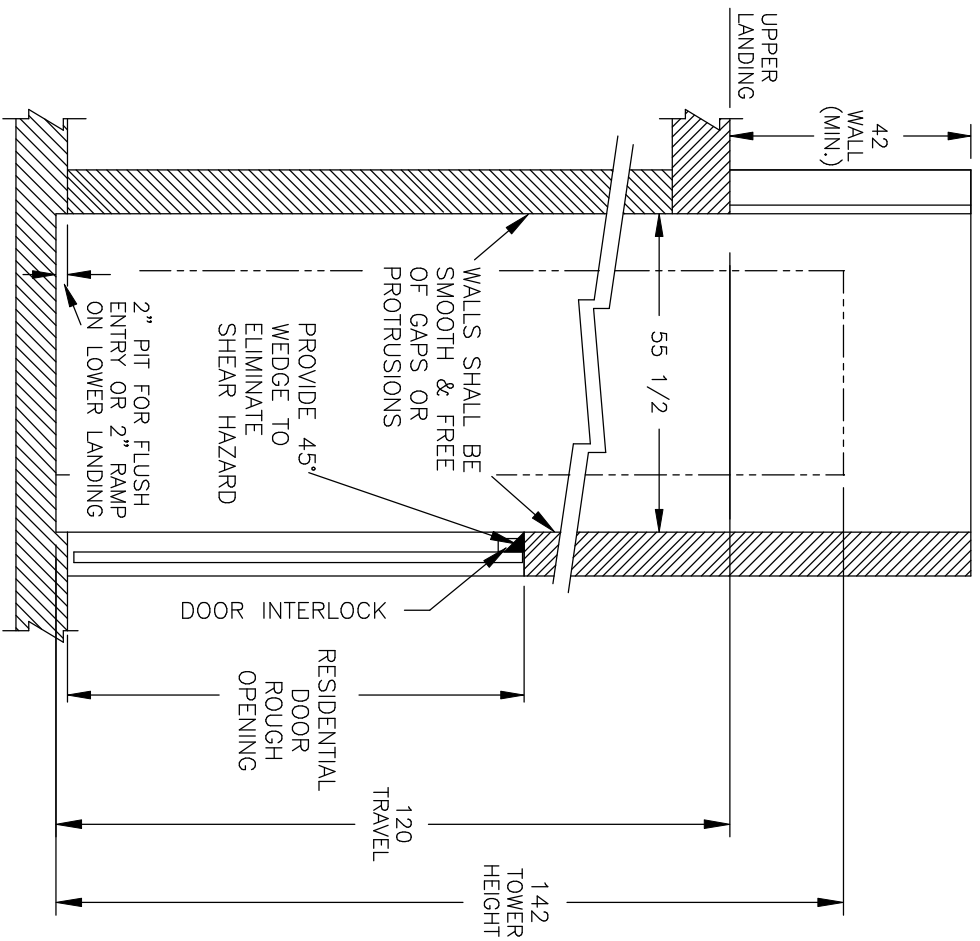
PLAN VIEW SECTION



DWN. BY:
 B.H.
 CHECKED BY:
 TRUS-T-LIFT ELEVATOR INSTALLATION DETAILS


SCALE:	N.T.S.	DATE:	18/03/03	DRAWING No.	120URREGDNP	1/2	REV
--------	--------	-------	----------	-------------	-------------	-----	-----

NOTES:
 - Dimensions are in inches
 - Designed and built to meet ASME-A17.1 Safety Code



SECTION A-A

TOTAL TRAVEL	120	INCHES	No. OF LANDINGS	2
LOCATION	ENCLOSED RESIDENTIAL TRUS<T>LIFT SAMPLE DRAWING RESIDENTIAL LIFT			
ARCHITECT				
GENERAL CONTRACTOR				

		TRUS-T-LIFT ELEVATOR INSTALLATION DETAILS	
		DWN. BY:	B.H.
SCALE:	N.T.S.	DATE:	07/02/03
CHECKED BY:		DRAWING No.	120URREGDNP 2/2
		REV	