

**TRUS-T-LIFT DIMENSIONS**

TOTAL TRAVEL	72	INCHES	No. OF LANDINGS	2
--------------	----	--------	-----------------	---

LOCATION UNENCLOSED TRUS-T-LIFT ADJACENT ACCESS WITH CARRIAGE GATE SAMPLE INSTALLATION

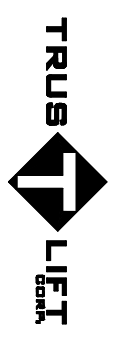
ARCHITECT

GENERAL CONTRACTOR

- SPECIFICATIONS:**
- 40" x 54" LIFT PLATFORM
  - 54" x 54" FOOTPRINT
  - 92" HEIGHT
  - 0" - 52" LIFT RANGE
  - MAXIMUM LOAD 550 lbs.
  - 8 FEET/MINUTE LIFT SPEED
  - SCREW NUT WORM GEAR DRIVE
  - MOTOR: 1/2 H.P. 110V A.C.
  - POWER SUPPLY: 110V/1PH/60HZ C/W 15A FUSED DISCON.
  - NON-LOAD BEARING BACKUP SAFETY NUT ON LIFT SHAFT
  - SAFETY HANDRAIL ON CARRIAGE
  - ZERO-LOAD START IN BOTTOM POSITION
  - SOLID DECK C/W SAFETY PAN

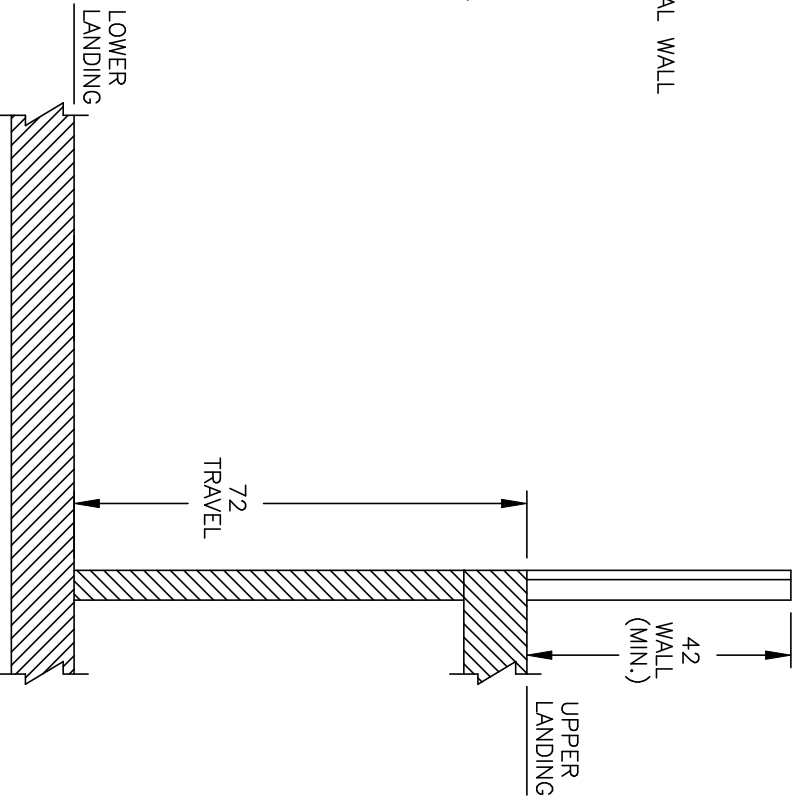
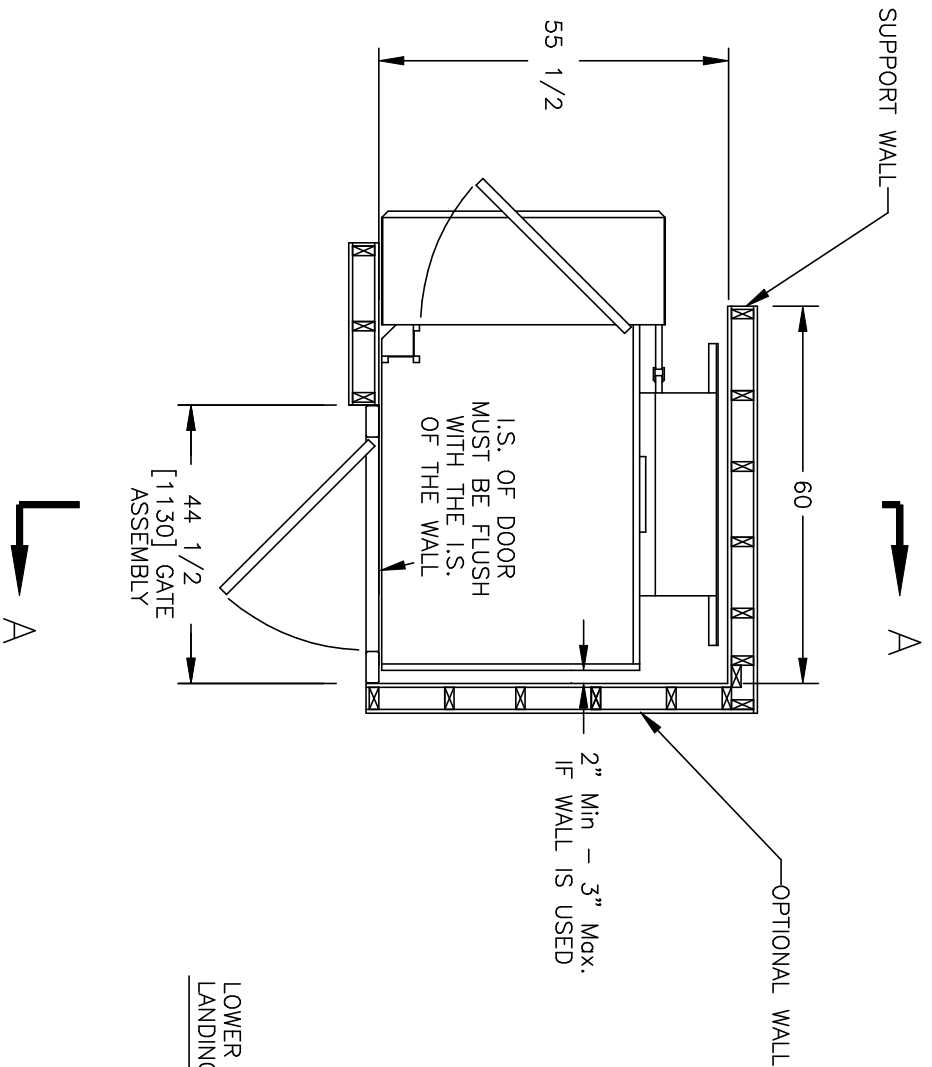
<input type="checkbox"/> Accepted as Shown
<input type="checkbox"/> Revise and Resubmit
<input type="checkbox"/> Accepted as Modified
Date: _____
Per: _____

- NOTES:**
- Dimensions are in inches
  - Designed and built to meet CSA B355-00 Safety Code & ASME A17.1 1996 Part XXI Safety Code



DWN. BY: B. HANNAH  
 CHECKED BY: \_\_\_\_\_  
 TRUS-T-LIFT ELEVATOR INSTALLATION DETAILS AND SPECIFICATIONS


SCALE: N.T.S.	DATE: 20/JUL/05	DRAWING No. 72UCUGNCA	1/2	REV A
---------------	-----------------	-----------------------	-----	-------



PLAN VIEW SECTION

SECTION A-A

TOTAL TRAVEL	72	INCHES	No. OF LANDINGS	2
LOCATION	UNENCLOSED TRUS-T>LIFT ADJACENT ACCESS WITH CARRIAGE GATE SAMPLE INSTALLATION			
ARCHITECT				
GENERAL CONTRACTOR				

DWN. BY: B. HANNAH			TRUS-T-LIFT ELEVATOR INSTALLATION DETAILS AND SPECIFICATIONS
CHECKED BY:			
SCALE:	N.T.S.	DATE:	20 / JUL / 05
		DRAWING No.	72UCLUGNCA
REV	A		